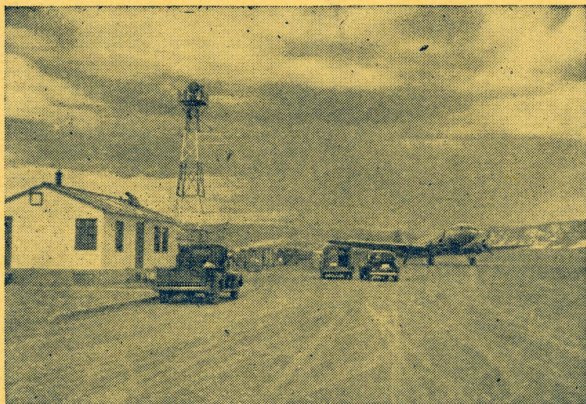


EAGLE and EAGLE COUNTY



CAA AIRFIELD AND INSTALLATIONS
WEST OF EAGLE



The Town of Eagle, in Western Colorado, is ideally situated at the junction of the valleys of Brush Creek and the Eagle River. It has an elevation of 6602 feet and is located on the main line of The Denver and Rio Grande Western Railroad and on U.S. Highway 6 and 24. Eagle is approximately midway between Denver and Grand Junction and 137 miles west of Denver.

Eagle is the County Seat of Eagle County. It has a municipally owned water and sewage system and has no bonded indebtedness. Eagle County likewise has no bonded indebtedness and both the town and county operate on a balanced budget.

Eagle is a thriving small town business center, supporting the following:

- 1 National Bank
- 1 Newspaper
- 2 Doctors
- 1 Dentist
- 3 Practicing Attorneys
- 3 General Stores
- 2 Restaurants
- 1 Lumber and Hardware establishment
- 1 Plumbing and Heating shop
- 1 Barber and Beauty Shop
- 1 Harness and Shoe shop

- 1 Drug Store
- 2 Pool Halls
- 2 Electric Appliance Shops
- 3 Garages (Including 2 new car agencies)
- 2 Bulk Gasoline plants
- 5 Filling stations
- 2 Farm Implement dealers
- 1 Hotel

Numerous Tourist Courts and Motels

- 1 Theater
- 1 Candy Shop
- 1 Real Estate Agency
- 1 Telephone Company
- 1 Power and Light Company
- 1 Dairy
- 1 Dry Goods Store
- 1 Mortuary
- 2 Coal Dealers
- 3 Contractors
- 1 Abstract Company

Eagle has a very modern Grade School and an Accredited High School with a high reputation throughout Western Colorado, both for its scholastic standing and its participation in school activities of all kinds.

There are three churches in Eagle consisting of the Community Methodist, Four Square Gospel and Catholic church organizations.

Eagle has a Masonic Lodge, Order of Eastern Star, Order of Rainbow for Girls, Boys and Girls Scout Troops, 4-H Clubs, Home Demonstration Clubs, Lions Club and the Eagle Chamber of Commerce.

ationer and the sportman. The Eagle River and its tributaries, headed by mountain lakes afford trout fishing second to none in the State of Colorado. Our timbered areas abound in wild life. Last big game hunting season the kill in Eagle County amounted to 7116 deer, 793 elk and 34 bear. There are a few bands of Big Horn Sheep in the district. We also have Blue and Willow Grouse and Sage Chickens. Good duck hunting may be had in season along our streams and on our lakes. While hunting and fishing of the best may be had adjacent to our highways, for those who prefer to pack in by horseback to the high country, there are numerous resorts near Eagle where such arrangements can be made.



Typical Big Game Scene in Timber
Near Eagle

Eagle is centrally located for any kind of sports. In the winter time the community operates a ski course and tow a few miles from the town and also maintains an excellent ice skating rink, in town which is lighted in the evenings. Within easy driving distance from Eagle one may go to Aspen, Cooper Hill and Arapahoe Basin, which are nationally known ski resorts. Glenwood Springs 32 miles from Eagle, maintains a year around outdoor swimming pool supplied by large hot springs.

The Civil Aeronautics Administration has erected an airport at a cost of approximately \$100,000 four miles west of Eagle, adjoining and south of U. S. Highway 6 and 24. The landing strip is graded and is 5,100 feet long by 475 feet wide. It is lighted continuously after dark and a C.A.A. operator is on duty at the field 24 hours a day.

Eagle County has an estimated 631,322,000 feet of lumber of which 116,000,000 feet is considered inaccessible and 25,000,000 feet have been set aside for a wilderness area, leaving a balance to be harvested. Eight saw mills are at present operating in Eagle County. The lumbering is carried on by private

interests. All timber in Eagle County is located on the White River National Forest. The timber is sold by the Federal Government to the private interests by having the timber appraised and then advertised and sold to the highest bidder. Twenty-five per cent of the amount so derived from such sales is paid to Eagle County by the Government.

Mining has been in progress in Eagle County, of which the Town of Eagle is the County Seat, since 1879 when the first claims were staked in the eastern end of the County. Since this time records of the United States Bureau of Mines show that Eagle County has produced approximately \$125,000,000 of various ores, but mainly gold, silver, copper, lead and zinc. During each of the past four years Eagle County has led every county in the State in the total value produced of the minerals mentioned. One of the largest zinc mines in the world is the Empire Zinc Company's mine in the upper end of Eagle County, in which mine the operators have been opening and developing ore bodies since 1912 and from which it has been carrying on a

regular production. The company has a 600-ton flotation mill built on a site cut out of solid granite in the face of Eagle Canon.

In the immediate vicinity of Eagle, almost within the town limits, lies large deposits of gypsum, running up to 93 per cent pure. These deposits are located but a few hundred feet from the main highway and the tracks of the Denver and Rio Grande Western Railroad Company. As yet they are entirely undeveloped.

THIS is the fabulous and famous Eagle country. Lush ranches; fat, sleek cattle and sheep. Land of the Rainbow trout—Heart of the Rocky Mountain Wonderland—where the fast rushing roar of the mountain streams is waited by air-conditioned breezes over the meadows and swept to the heights of the snow capped peaks jutting into the bluest sky in the world. One must come to see it to be able to appreciate this fairyland with its icy mountain streams teeming with fighting trout—the majestic forests abounding in elk and deer—the excellent mountain high-

Typical Big Game Scene in Timber
Near Eagle

One of many lakes in Eagle
County stocked with the big ones

ways winding past thousands of acres of farmland. Here the vacationer can climb dizzy peaks and look over breath taking distances; fish, hunt, ski or just relax in the warm mountain sunshine and enjoy the peace, plenty and contentment that is the Eagle country.

THIS is the country that surrounds the town of Eagle. Whether you are interested in mining, fishing, hunting, hiking, skiing or camping, make EAGLE your headquarters.

For further information write to
Secretary
Eagle Chamber of Commerce
Eagle, Colorado



Did he make it?



One of many lakes in Eagle vicinity, stocked with the big ones

LIST OF COUNTY PREFIX NUMBERS ON COLORADO LICENSE PLATES

No.	County	No.	County
1	Denver	33	Lincoln
2	Pueblo	34	Elbert
3	Weld	35	Saguache
4	El Paso	36	Crowley
5	Las Animas	37	Phillips
6	Larimer	38	Costilla
7	Boulder	39	Sedgewick
8	Mesa	40	Gunnison
9	Otero	41	Lake
10	Arapahoe	42	Moffat
11	Jefferson	43	Teller
12	Adams	44	Eagle
13	Logan	45	Kiowa
14	Fremont	46	Cheyenne
15	Morgan	47	Douglas
16	Huerfano	48	Archuleta
17	Prowers	49	Rio Blanco
18	Delta	50	San Miguel
19	Yuma	51	Clear Creek
20	La Plata	52	Custer
21	Montrose	53	Grand
22	Baca	54	Park
23	Rio Grande	55	San Juan
24	Garfield	56	Ouray
25	Conejos	57	Pitkin
26	Kit Carson	58	Dolores
27	Washington	59	Jackson
28	Routt	60	Gilpin
29	Bent	61	Summit
30	Alamosa	63	Hinsdale
31	Chaffee	62	Mineral
32	Montezuma		

Abbreviation On License Plates

Passenger	None	Motorcycle	MC
Commercial	Comm	Passenger dealer	Dlr
Truck	T	Truck Dealer	TD
Trailer	TRLR	Motorcycle dealer	Mcd

Courtesy of
Eagle Chamber
of Commerce